

Certificate of Analysis

Product: 121212 Lavandula angustifolia organic 1118\_1

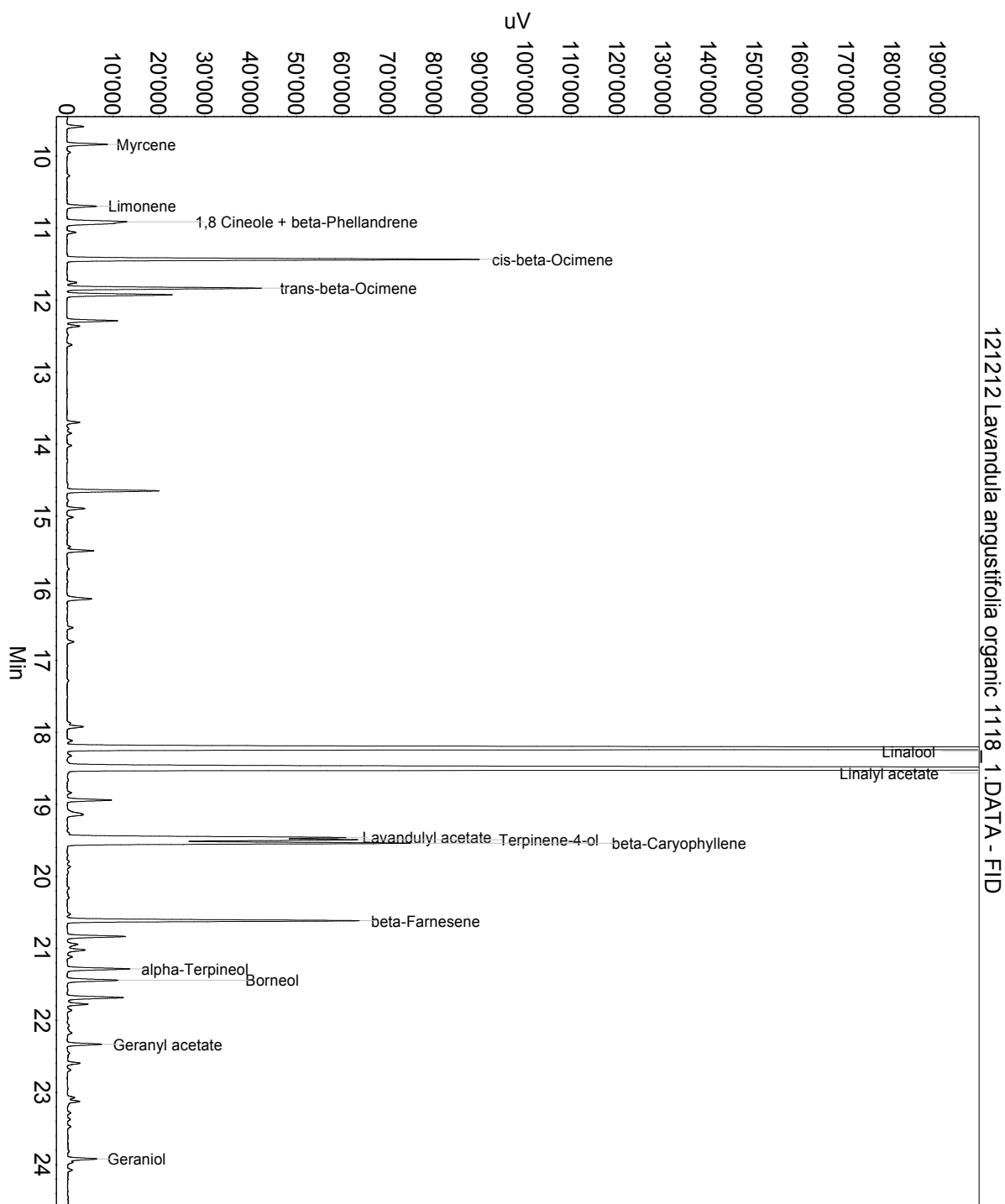
Lot: 1118

Date of analysis: 23.10.2013 05:48:48

System: GC-430 FID

Column: BGB Wax 60m / 0.25mm / 0.25um

Method: 130516 Lavandula angustifolia AOP



This data sheet was issued to the best of our knowledge and is supplied without warranty for its correctness or accuracy.

## Certificate of Analysis

**Product: 121212 Lavandula angustifolia organic 1118\_1**

Lot: 1118

Date of analysis: 23.10.2013 05:48:48

System: GC-430 FID

Column: BGB Wax 60m / 0.25mm / 0.25um

Method: 130516 Lavandula angustifolia AOP

Index	Name	Time [Min]	Area [uV.Min]	Area % [%]	Allergene
1	Myrcene	9.84	255.8	0.466	
2	Limonene	10.70	199.7	0.364	Directive 2003/15EC (7th)
3	1,8 Cineole + beta-Phellandrene	10.91	655.4	1.193	
4	cis-beta-Ocimene	11.44	2644.7	4.816	
5	trans-beta-Ocimene	11.84	1246.4	2.270	
6		11.93	669.4	1.219	
7		12.29	318.9	0.581	
8		14.65	575.7	1.048	
9		14.89	115.1	0.210	
10		15.48	163.2	0.297	
11		16.15	196.1	0.357	
12		18.12	35.8	0.065	
13	Linalool	18.23	15947.7	29.039	Directive 2003/15EC (7th)
14		18.33	32.1	0.058	
15	Linalyl acetate	18.51	20824.9	37.920	
16		18.94	284.5	0.518	
17	Lavandulyl acetate	19.46	2189.8	3.987	
18	Terpinene-4-ol	19.49	1469.1	2.675	
19	beta-Caryophyllene	19.54	2368.5	4.313	
20	beta-Farnesene	20.61	1899.3	3.459	
21		20.83	386.8	0.704	
22		20.94	91.8	0.167	
23		21.02	140.6	0.256	
24		21.12	34.2	0.062	
25	alpha-Terpineol	21.28	438.2	0.798	
26	Borneol	21.44	368.3	0.671	
27		21.68	546.2	0.995	
28		21.86	35.2	0.064	
29	Geranyl acetate	22.33	223.6	0.407	
30		22.59	89.1	0.162	
31	Geraniol	23.92	237.9	0.433	Directive 2003/15EC (7th)
32		26.64	177.3	0.323	
33		29.58	56.4	0.103	
Total			54917.7	100.000	

This data sheet was issued to the best of our knowledge and is supplied without warranty for its correctness or accuracy.